



GLENROSE
REHABILITATION HOSPITAL
FOUNDATION

Courage

THROUGH THE YEAR



Navigating the past year, through the COVID-19 pandemic, has been a test for even the most fortunate of us. It has shed a light on how adaptable and resilient we can be when the moment requires it. In Alberta, it has also underscored the critically important role a single, province-wide health authority can play when a significant health crisis, like COVID-19 emerges.

Together we accomplished so much in 2020, despite the challenges that COVID-19 presented. As you read through this report you will get a glimpse into the lives of patients impacted by community generosity and how special the Glenrose Rehabilitation Hospital is to patients and their families, and the community more broadly. It is a crucial resource to our entire integrated health care system in Alberta, and beyond.

The Glenrose Rehabilitation Hospital is the largest rehabilitation medicine hospital in Canada and attracts international attention for its strong focus on innovation and technology to help improve patient outcomes. As the President & CEO of the Glenrose Rehabilitation Hospital Foundation, I am energized to work alongside world class clinicians, researchers, and front-line staff to help further catalyze advancements in rehabilitative care.

Our focus, first and foremost, will be on working to build deep, trusting relationships with our Glenrose community – clinicians, researchers, staff, donors, and patients. We will also be intentional about building authentic partnerships with key stakeholders, to improve the entire continuum of care for patients in our healthcare system. Finally, in partnership with the hospital, we want to set audacious aspirations for ensuring the Glenrose is consistently recognized as a world leader in rehabilitative care.

Thank you for your support this year, it has never been so important, and so appreciated.

A handwritten signature in blue ink, appearing to read 'Mark Korthuis'.

Mark Korthuis
President & CEO, Glenrose Rehabilitation Hospital Foundation

The Glenrose Rehabilitation Hospital is the largest freestanding, comprehensive tertiary rehabilitation hospital in Canada.

With nearly 80,000 patient visits every year, our hospital helps patients living with illness, injury or chronic conditions gain or regain their independence.

The Glenrose Rehabilitation Hospital Foundation provides innovative equipment, programs and technology in order to help patients recover, relearn life skills and rediscover their full potential.

Table of Contents

COVID-19 Response	4
Chadi Centre for Pediatric Rehabilitation	6
Stories of Courage & Impact	10
Financials	12
Board of Trustees	15

COVID-19 RESPONSE

THE MIRACLE MAN

When Bill Maxim fell ill in March of 2020, he thought it was just a bad cold. But his symptoms persisted, and the 81-year-old eventually had trouble breathing and had to be rushed to the hospital. Once there, he was intubated and diagnosed with COVID-19. Bill does not remember much from his time in the ICU besides waking up and being told he had pneumonia and blood clots on his lungs that almost killed him. After five weeks in intensive care Bill was transferred to the Glenrose Hospital to start rehabilitation. When he arrived, he could not walk without assistance, and he relied on an oxygen supplement to breathe. The illness left Bill extremely weak, unable to even grip a fork. Over the next few weeks of intensive therapies Bill started to regain his strength and lung function. Finally, after two-and-a-half months in hospital Bill was able to go home and see his family. They call him 'the Miracle Man' for beating the odds against COVID-19 and returning to his life. Glenrose staff were so impressed with Bill's determination and positive approach to rehabilitation that they nominated him for a Glenrose Courage Award. In November 2020, Bill accepted his award at the virtual ceremony, with his family watching from their homes.



determination  



DONOR GENEROSITY DURING COVID-19

When COVID-19 restrictions meant that patients could no longer have visitors and had to spend long periods of time in their rooms, some incredible donors came to the rescue. In December 2020, the Glenrose Foundation put out the call on social media for communication and entertainment items, like iPads and Lego sets. The iPads have been invaluable for allowing patients of all ages the chance to talk to their families and loved ones, while the toys and games helped entertain children in the pediatric in-patient unit. Patients and staff were grateful for the gifts and made good use of them during the pandemic lockdown.



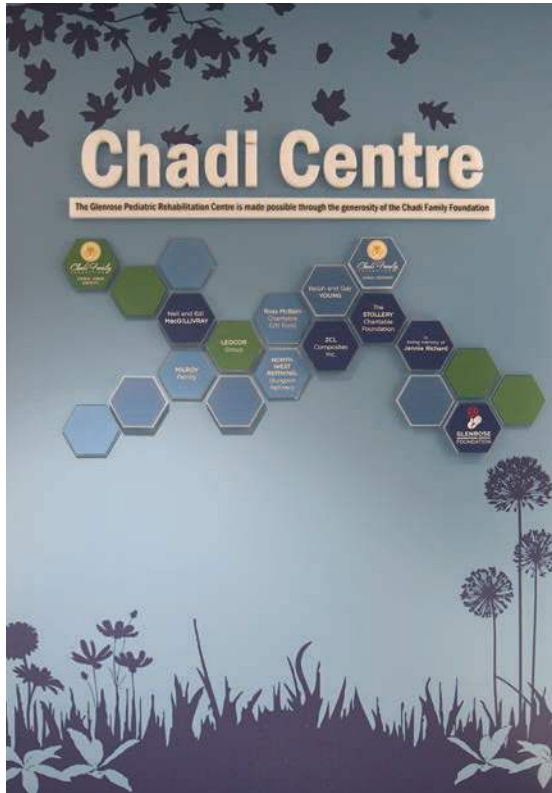
**The
Frontline
Fund**



THE FRONTLINE FUND

Hospital foundations across Canada, including the Glenrose Foundation, joined together in a campaign to support frontline healthcare workers during the pandemic. The Frontline Fund gained support from national corporations and individuals, raising over \$12 Million for Canadian healthcare workers. With their share of the funds, the Glenrose Hospital was able to purchase communication devices and other equipment.

CHADI CENTRE FOR PEDIATRIC REHABILITATION



Thanks to several generous donors, the pediatric rehabilitation space at the Glenrose Hospital was completely renovated in 2020. The brand-new Chadi Centre for Pediatric Rehabilitation opened in early 2021 and features state-of-the-art rehabilitation equipment along with specially designed rooms to best meet the needs of young Glenrose Hospital patients.

CHADI FAMILY FOUNDATION



Many years ago, I was asked to join the board of the Glenrose Foundation with a mandate to support the hospital with awareness, programing, equipment, and capital improvements wherever and whenever necessary. I discovered a facility that transforms lives and gives back hope. The patients and particularly the pediatric patients that receive treatment will melt your heart. Their demeanour, spirit and ability to overcome will without question, make any problem I faced, completely minuscule and trivial.

We, the residents of Edmonton and Northern Alberta are most blessed to have a rehabilitation hospital like the Glenrose. This one-of-a-kind facility is often referred to as place that gives a person's life back after it was taken away by some terrible accident or debilitating illness, and without a doubt, this is most certainly true! I am so proud that the Chadi Foundation was able to help create the Chadi Centre for Pediatric Rehabilitation.

Sine Chadi, Lead Donor
Chadi Centre for Pediatric Rehabilitation





SPLINTING & CASTING ROOM

Before the renovation, pediatric patients requiring a splint or cast appointment would be transported from the children's area, across the hospital, to the adult area. The long trip, to an unfamiliar part of the hospital, often left kids apprehensive or scared before their procedures. Adding a splinting and casting room, specially designed for pediatric needs, to the Chadi Centre means children stay where they feel comfortable. The new room features child-friendly art and fun distractions to make the procedures a bit easier.



GORDON & DIANE BUCHANAN FAMILY FOUNDATION



I first became aware of the Glenrose through Sine Chadi. I was standing in the hallway waiting for a tour and I watched this tiny fellow in what looked like a walker stroller. He may have been four. He was just standing there not moving. His grandmother threw a ball. He suddenly perked up and started to move, as fast as his little legs would take him, over and over again. The brain was connecting to the legs. I thought, you go little man, go!

I later learned that this little guy would have to go through repeated procedures requiring casts. They would be painful, and he would be scared when he went into the cast room. Now, it may still be painful, but he will have funny characters, bright happy colours and a reward with a treat each time.

**Diane Kyle-Buchanan, Donor
Pediatric Casting and
Splinting Room**



GAY & RALPH YOUNG



We have been greatly inspired knowing of the lives which have been rehabilitated through the exceptional treatment, care, facilities and specialized equipment made available at the Glenrose. We have felt it important for our community at large to take a lead in contributing to unique and essential community needs. There are few things more rewarding than to see such positive outcomes for individuals and families.

**Ralph Young, Donor
Chadi Centre for
Pediatric Rehabilitation**



Sadly, Gay Young passed away in May 2021. Although she will be sorely missed, her legacy is one of service to her community, including the many Glenrose patient lives impacted by her kindness and generosity.

EDITH & NEIL MACGILLIVRAY



We are thankful to be in a position at this time to donate to a healing centre. The Glenrose helps so many with rehabilitation which included our granddaughter at one time. Feeling blessed to help keep great things happening at the Glenrose.

**Edith and Neil MacGillivray, Donor
Chadi Centre for Pediatric Rehabilitation**



PEDIATRIC GYM

The new pediatric gym in the Chadi Centre features children's strength training equipment used across multiple programs. In particular, much of the strengthening equipment supports a brand-new, evidence-based, "Resistance Training Intensive (RTI)" program designed to help children meet their functional goals. This program is the first of its kind in Canada and is modelled on the most current evidence for helping children improve their function in everyday life. Examples of goals that Glenrose patients have set, and achieved: run without falling, get up from the floor by themselves, walk inside the house without having to use crutches, and go up the stairs without using a railing.

In order to deliver high quality treatment programs such as the RTI, specialized equipment is needed. Much of this equipment is specific strength training equipment, but some are toys used to motivate children to perform their best. Pediatric physical therapists get creative with the ways they use toys to help children work their hardest and have fun at the same time.



Thank you

to all the donors
who made this project possible:

Chadi Family Foundation

Gordon & Diane Buchanan
Family Foundation

Milroy Family

Ledcor Group

Ross McBain Charitable Gift Fund

North West Refining:
Sturgeon Refinery

Ralph & Gay Young

Neil & Edith MacGillivray

ZCL Composites Inc.

The Stollery Charitable Foundation

In memory of Jennie Richard



STORIES OF COURAGE & IMPACT



BITS

The Bioness Integrated Therapy System (BITS) is new to the Glenrose Hospital but it is already impacting patient lives. It combines touchscreen technology with special software that is used to assess, treat and track patient performance with visual and auditory processing, cognitive skills and motor activities. Access to cutting-edge technology, like the BITS, means faster recoveries for many Glenrose patients. The BITS was funded through donations to the Glenrose Foundation.

KAREN & MIKE

For Karen, the first stroke happened in 2018. She lost the ability to speak, read and write, and spent six weeks in the early intervention program at the Glenrose Hospital. Since then she has had two other strokes, the worst one in May 2020. Mike, her husband of 38 years, was by her side as Karen lost all sensation in her left foot, and in parts of each of her hands, her cheek and tongue. It affected her in so many ways, from being unable to swallow, to losing her mobility and suffering vertigo, dizziness and a loss of depth perception. She lost her speech, her ability to read and even her ability to carry on a conversation naturally. She was devastated by all these losses, but especially having to retire early from the 30-year job she loved as a social worker.

Mike felt helpless as he watched Karen struggle with the pain and loss. Even once she started her rehabilitation at the Glenrose Hospital she would be frustrated when she could not accomplish an activity or complete simple tasks. Her team of therapists and care staff would not let her be disappointed in herself. They helped her understand what kind of timelines to expect. And they always treated her to direct answers. Karen took that motivation too far sometimes and would work too hard. But they knew when to pull her back a bit, so she would not get too tired.

Today Karen is back home with Mike and can walk, with a walker. She's still working on regaining abilities as an outpatient at the Glenrose Hospital but she has come so far already.



HERMAN

Herman's rehabilitation journey began several years ago when he was the victim of a random act of violence. He sustained a gunshot wound to the head while driving, fired by someone in another vehicle fleeing police. Herman's family was told he probably would not survive, but he did. After months in intensive care he was transferred to the Glenrose Hospital for rehabilitation.

Herman was an inpatient at the Glenrose Hospital for four months. When he arrived, he had been set back decades in his abilities. He couldn't stand or walk on his own and was unable to speak or understand basic instructions – he had almost every communication impairment a person can have. The coordination of his swallow was also so impaired that he required a tube through the stomach for feeding.

As an inpatient, Herman worked extremely hard to regain his abilities. His family was incredibly supportive and attended every therapy session. Walking and navigating around the hospital, problem-solving daily tasks and eating and drinking again were his earliest successes, but Herman didn't stop there. He set his sights on long-term goals like playing golf, living alone and driving again. Herman had made exceptional progress with his communication and was able to participate in simple conversations, however there was still a lot of work left to do. He returned to the Glenrose Hospital as an outpatient in February 2020 to continue working on his communication and psychology goals.

As a victim of crime, it takes immense courage to fight to regain your independence and life. What happened to Herman was just a case of being in the wrong place at the wrong time. Recovery from an injury of this magnitude does not happen overnight and Herman has pushed hard every day for his recovery. This positive attitude and participation led to substantial progress, including getting Herman back behind the wheel of his car.



3D PROSTHETIC PRINTER

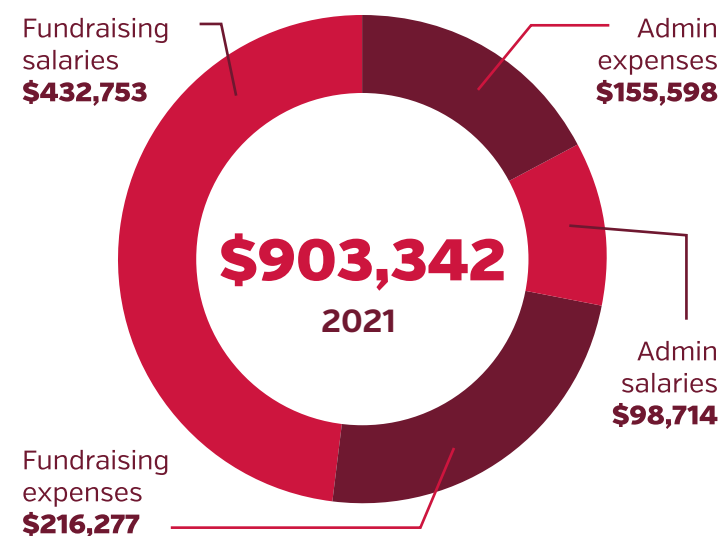
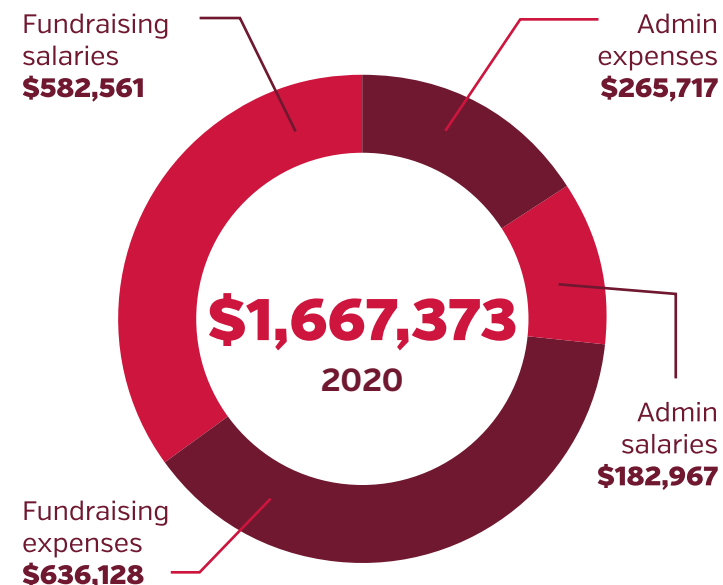
The 3D printer was funded by a special group of donors who form the Circle of Courage. It was custom built to meet the needs of Glenrose patients, making unique prosthetic sockets, in a very short amount of time. For patients with a prosthetic, this means a more comfortable fit and an easier return to their lives.

FINANCIALS

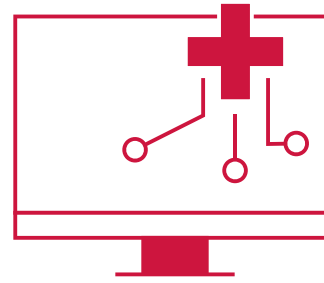
	2021	2020
REVENUE		
Donations and fundraising	\$1,683,152	\$2,182,019
Casino	\$206,968	\$161,090
Government grants and assistance	\$371,435	\$163,551
Realized gains on investments	\$91,733	\$104,347
Unrealized gain (loss) on investments	\$905,304	[\$498,656]
Dividends and interest	\$145,289	\$196,534
Total	\$3,403,881	\$2,308,885

EXPENSES		
Administrative	\$254,312	\$448,684
Fundraising	\$649,030	\$1,218,689
Total	\$903,342	\$1,667,373

Revenue over Expenses before Distributions	\$2,500,539	\$641,512
Distributions to Glenrose Rehabilitation Hospital	\$1,620,754	\$1,617,904
Revenue over Expenses	\$879,785	[\$976,392]

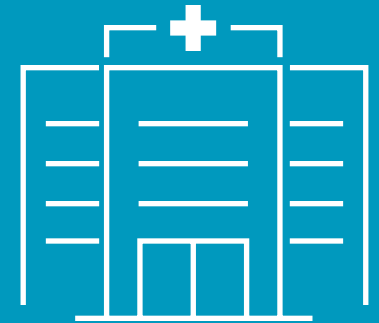


Community donations directly support our mission of advancing rehabilitative care at the Glenrose Hospital by fueling innovative research and education, as well as acquiring advanced equipment and technology. Donor investments give patients, their families and staff an array of tools to help them positively shape their futures. **Thanks to donors, Glenrose Hospital patients can reimagine their futures.**



TECHNOLOGY & EQUIPMENT
\$118,789

WHERE DO DONATIONS GO?



FACILITIES & PROGRAMS
\$588,314



RESEARCH
\$913,651

FUTURE COMMITMENTS

\$4,025,412



Glenrose Rehabilitation



2020/2021 Board of Trustees

Jonathan Gallo, CPA, CA, MBA

Honourable Laurie Hawn

Catherine Hill

Katherine Huising

Wendy King

Kelly McClung

Jason S. Randhawa, ICD.D

Adam Sweet

Karen Wichuk



GLENROSE
REHABILITATION HOSPITAL
FOUNDATION

#1018 10230 111 AVENUE NW
EDMONTON, AB T5G 0B7
780-735-6024

GLENROSEFOUNDATION.COM