

The background is a deep red with a subtle, mottled texture. Five large, stylized red floral motifs are scattered across the page. Each motif is a complex, symmetrical design with multiple layers of petals and a central circular element.

ANNUAL SUMMARY

2016 – 2017

#wearecourage

view our digital annual report
at glenrosefoundation.com

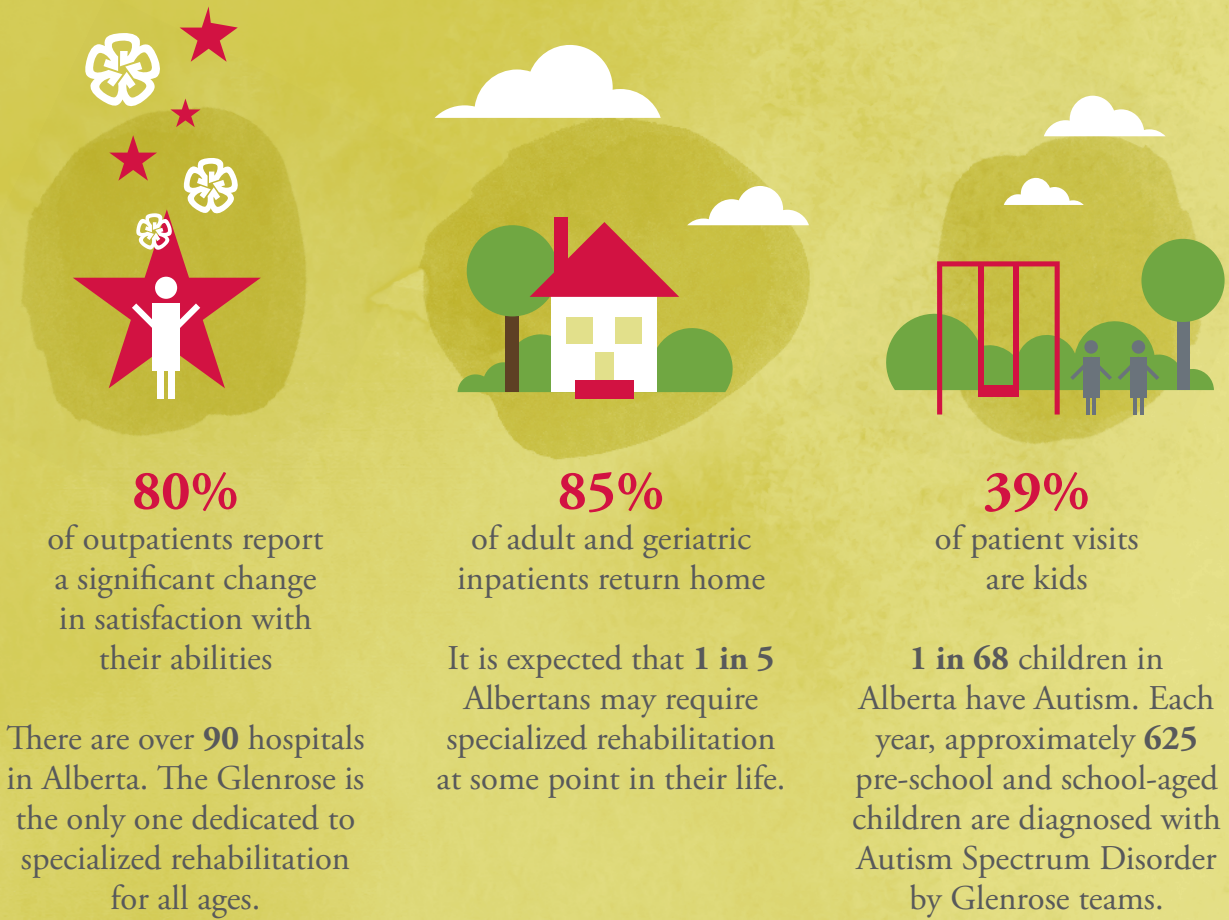


GLENROSE
REHABILITATION • HOSPITAL
FOUNDATION

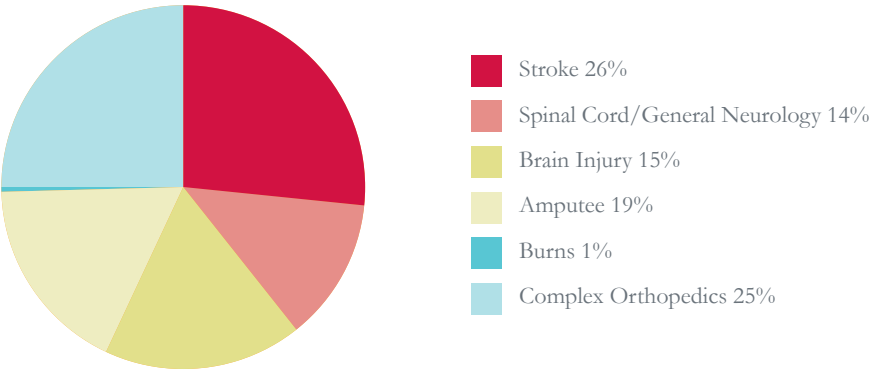
Courage. Encouraged.



WHY SUPPORT THE GLENROSE AND REHABILITATION?



ADULT REHABILITATION PROGRAMS - INPATIENT



These statistics offer a glimpse into why a loved one might come to need care at the Glenrose.

FINANCIALS

Revenue

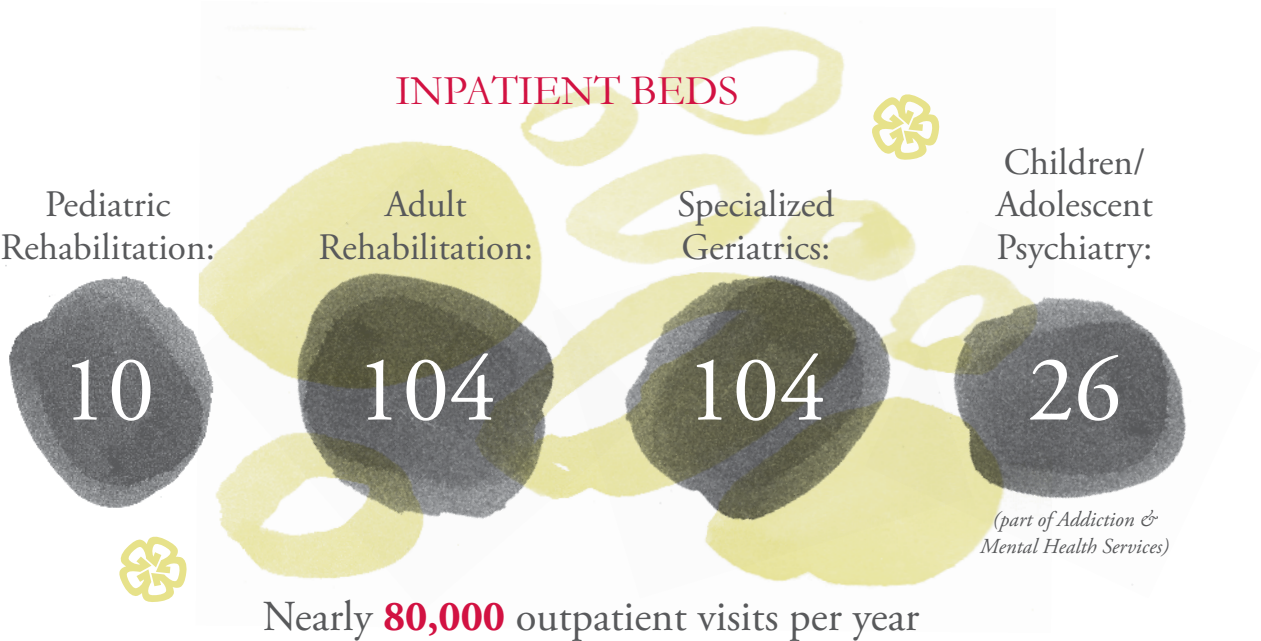
	2017	2016
Donations	\$1,333,701	\$1,338,647
Casino	\$72,947	\$-
Fundraising	\$615,345	\$559,276
Grants	\$130,500	\$130,500
Realized gains on investments	\$26,730	\$70,057
Unrealized gain (loss) on investments	\$167,286	\$(167,746)
Dividends & interest	\$162,341	\$150,557
Total	\$2,508,850	\$2,081,291

Expenses

Administrative	\$214,758	\$232,305
Fundraising	\$ 669,207	\$566,766
Portfolio management fees	\$33,736	\$33,070
Total	\$ 917,701	\$832,141

Revenue over Expenses before distributions	\$1,591,149	\$1,249,150
Distributions to Glenrose Rehabilitation Hospital	\$1,318,242	\$635,722
Revenue over Expenses	\$272,907	\$613,428

**This is an abbreviated statement. Complete audited financial statements are available upon request.*

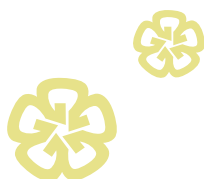



VISION

To inspire hope, restore independence and harness innovation to unleash human potential.

MISSION

We are passionate champions of rehabilitation. We work to educate, inspire and create awareness while fostering relationships with stakeholders. We raise and provide critical funding for initiatives that are core to our vision and support patients and their families. We constantly seek to push beyond the boundaries of what's possible to keep the Glenrose Rehabilitation Hospital at the forefront of rehabilitation care.



Thank you for
giving courage
strength. 



Office #1018, Glenrose Rehabilitation Hospital
10230 111 Avenue, Edmonton, Alberta T5G 0B7
P. 780 735 6024 E. info@glenrosefoundation.com
www.glenrosefoundation.com

 [@glenrosefdn](https://twitter.com/glenrosefdn)  [@glenrosecourage](https://www.instagram.com/glenrosecourage)
Charitable Registration # 89101 6347 RR0001

BOARD OF TRUSTEES

Chair, David King
Vice President, The Luxus Group

Past Chair, Nick Parkinson
President & CEO, YMCA of Northern Alberta

Vice-Chair, Rick Vogel
Partner, Pekarsky & Co.

Treasurer and Finance Committee Chair, Monica Park
Director, Banking, Treasury Board & Finance,
Government of Alberta

Secretary, Cathy Kiss
Principal, Crown Strategic Consulting Inc.

**Chair, Community Relations & Fund
Development Committee, Chris Lavin**
Partner, Consulting Services, MNP LLP

Trustee, Janice Agrios, Q.C.
Partner, Kennedy Agrios LLP

Trustee, Richard Cotter, Q.C.
Partner, Dentons

Trustee, Jonathon Gallo
Principal and Owner, Gallo & Company
Chartered Accountants

Trustee, Honourable Laurie Hawn
Community Volunteer

Trustee, Kelly McClung
Vice President, Strategy, Jiffy Lube

Trustee, Greg McNeill
Human Resources Director, Finning (Canada)

Trustee, Jason Randhawa
President & Managing Partner, Randhawa Consulting Ltd.

Trustee, Dallas Smith
Senior Account Manager, Commercial Markets,
Royal Bank of Canada

Trustee, Gay Young
Community Volunteer

Isabel Henderson
Senior Operating Officer,
Glenrose Rehabilitation Hospital, Alberta Health Services

Wendy Dugas
President & CEO,
Glenrose Rehabilitation Hospital Foundation

